

T01184

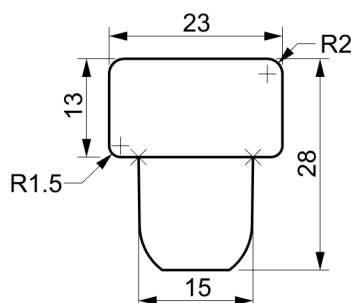
ELITECAP WOOD 23x13-15 NATURAL BEECH INJ

Date 04-12-18 Print 24-05-21

Format A4 - Drawing 3248

SPECIFICATIONS

S V



Scale 1:1

Dimensional Tolerances $\pm 0,3$ mm.

Top Part	Wooden Top beech natural color
Body Part	Foamed Blend of thermoplastic material
Color	Beige
Weight gr.	5,20 + / - 20%
Assembled	Co-injected System unbreakable 100%
Box pcs.	1400 x 2
Cust. Ref.	

Extraction Force needed from 60 to 200 Newton - ISO11311

AQL (acceptable quality level): 0,3%

Vetroelite SPA DECLARES that all items comply with current CE and FDA legislations governing products intended for food contact. The material is suitable for use as packaging in the range of temperatures from 0 to 50°C. For more details please see our Declaration of Conformity. Vetroelite SPA can't guarantee performances of its products for any other use not previously agreed with its technical office.

Beverage declared alc/vol. (To be filled in by Customer)

Customization



Computer graphic, image: colors may appear different from real product colors

VETROelite
MADE IN ITALY
ELITECAP

Vetroelite S.P.A.

Via Primo Maggio 4
31024 Ormelle TV Italy
T +39 0422 205711

info@vetroelite.com
www.vetroelite.com

This specification is property of Vetroelite SPA. It must not be copied or disclosed in any form unless under written permission received by Vetroelite SPA. Vetroelite SPA. reserves the right to modify the content of this document without giving any notice.