

**Item: SM130028-204****Wide neck jar Saturn 300ml, 63/400, Miron**

Old code: WHA-B-300

**Certificate of conformity**

The above mentioned glass container has been manufactured in conformity with:

- 94/64/EC
- EC 1935/2004
- EC 2023/2006

The above mentioned product is in compliance with requirements of the standards and regulations: Regulations of Ministry of Health of the Czech Republic No. 38/2001 Coll. as amended, DIN 51 032:1986, ISO 7086-2:2000, BS 6748:1986, GOST 30407-96 (lead and cadmium content in leachate from silicate surfaces).

Settlement number CGC-91-938430 – tested according to ASTM C738-94:2011 (lead content in leachate from silicate surfaces).

Ministry of Health decree No. 38/2001 Coll. as amended, GOST 30407-96, CSN 70 3100:1987 – tested according to CSN ISO 719:1992 (hydrolytic resistance of glass grants at 98°C – HGB 3)

GN 2.3.3.972-00 (boron, arsenic, aluminum, manganese, copper, chromium and cobalt content in leachate from silicate surfaces).

Regulation of the Parliament of the Czech Republic No. 477/2001 Coll. As amended (Pb, Cd, Hg and Cr<sup>6+</sup> content).

Certificate has been issued based on different test reports.

The glass actually sold corresponds to a conventional soda-lime glass and is tested according to DIN ISO 719:1985.

Glass containers are also manufactured in conformity with standards referred to certificate No. CQ-12/2022, issued by IKATES s.r.o. Teplice, certificate authority No. 3065.

Glass containers are made without BPA, PBB, PBDE, PCB and PFAS.  
Glass containers are made without GMO.

Production quality management system is certified according to ISO 9001:2015 by Intertek.

***REACH Declaration***

The producer hereby declares that the Registration, Evaluation, Authorization and Restriction of Chemicals (REACH) regulation, as enacted by the European Union (EU), is not applicable to the above mentioned product.

The REACH regulation primarily focuses on the registration, evaluation, authorization and restriction of chemicals and chemical substances. Glass, which is the primary material used in the manufacturing process of the above mentioned product, is not a chemical substance governed by REACH. Glass is a chemically inert and stable material and does not release substances that require registration or evaluation under REACH.

The above mentioned product does not contain any chemical substances intentionally added for chemical or functional purposes that fall under the scope of REACH. Furthermore, the manufacturing processes adhere to industry standards, and the producer does not use or introduce any substances or chemicals into their glass containers that are restricted or prohibited by REACH.

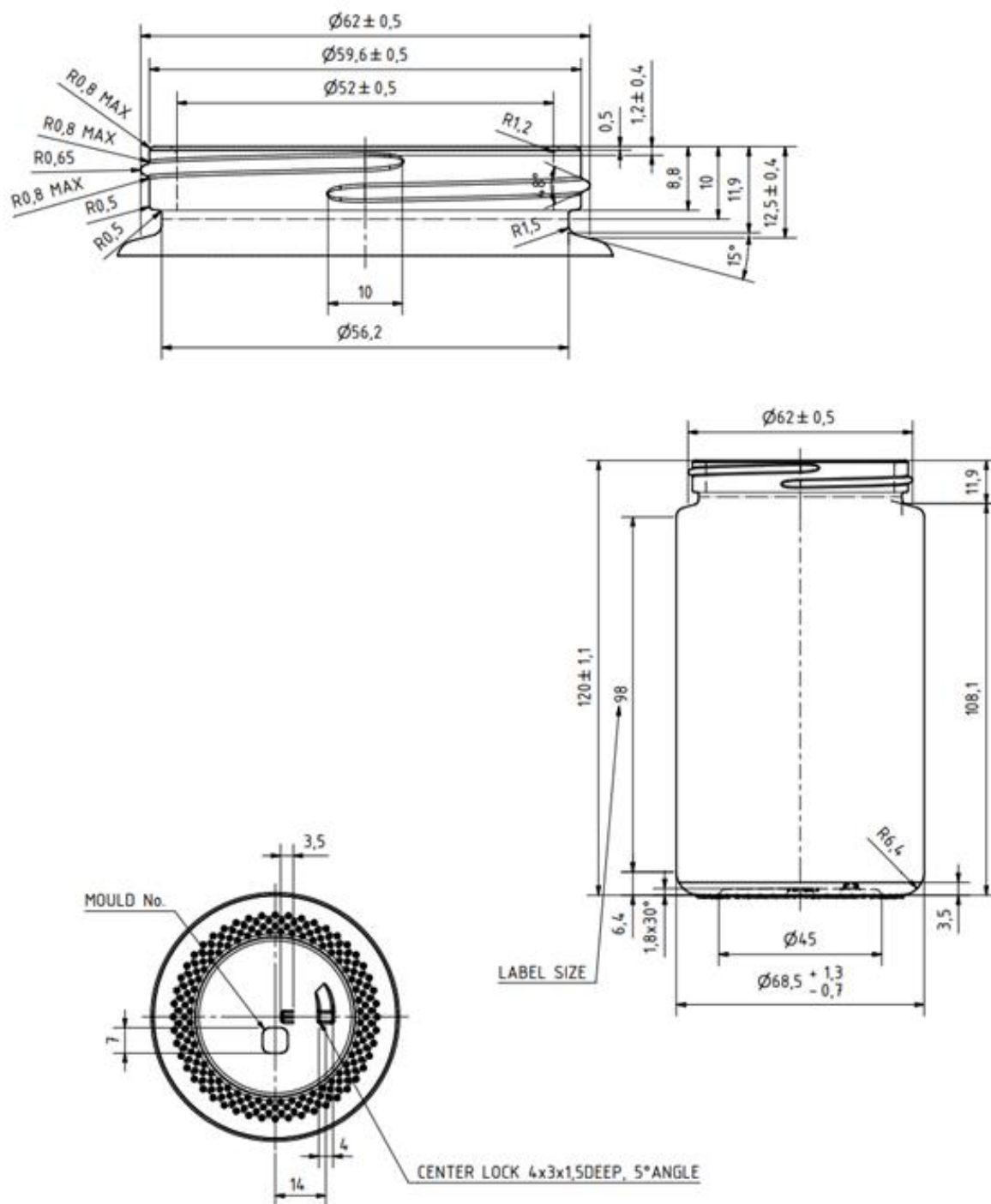
The producer is committed to complying with all relevant regulations and standards to ensure the safety, quality and environmental responsibility of their products. They also regularly monitor regulatory developments and updates to ensure ongoing compliance.

***Storage and transport***

Safety aspects do not require any special precautions in terms of storage.

There are no special requirements to temperature or humidity. However, high fluctuations in temperature have to be avoided, so that no condensation should be caused.

- Screen off from direct thermal radiation (distance at least 1m) and protect from direct solar radiation
- Storage in closed areas, protect against direct wetness and frost proof store
- Protect from mechanical effects, packaging should not be damaged

**Technical drawing (SM130028-204)**

This document is created electronically and is valid without a signature.

Filling capacity: 300ml  
 Brimfull:  $330 \pm 7\text{ml}$   
 Weight: approx. 240g