

# SCTSBE2514/1023

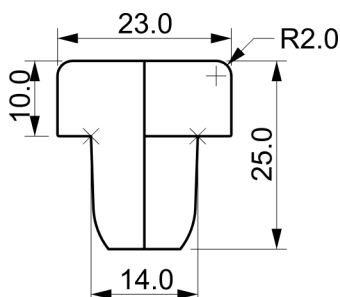
T Monopiece beige diameter 14 Top 10x23

Date 11-09-19 Print 03-04-24

Format A4 - Drawing 3686

## SPECIFICATIONS

S V



Scale 1:1

Dimensional Tolerances  $\pm$  0,3 mm.

(\*H)Height Dimensional Tolerances  $\pm$  0,5 mm.

Top Part	Monopiece
Body Part	Foamed Blend of thermoplastic material
Color	Beige
Weight gr.	2,90 + / - 0,5
Assembled	Monopiece unbreakable 100%
Box pcs.	2000 x 2
Cust. Ref.	

Extraction Force needed from 60 to 200 Newton -ISO11311

AQL (acceptable quality level): 0,3%

SUPERCAP DECLARES that all items comply with current CE and FDA legislations governing products intended for food contact. The material is suitable for use as packaging in the range of temperatures from 0 to 50°C. For more details please see our Declaration of Conformity. Supercap Srl can't guarantee performances of its products for any other use not previously agreed with its technical office.

Beverage declared alc/vol. (To be filled in by Customer)

## Customization



We herewith declare that some working processes (the ones regarding components not in direct contact with the liquid) may be done by subcontractors. Supercap has the responsibility on the final product released.

Computer graphic, image: colors may appear different from real product colors

**Supercap** **BRCS**  
Packaging Materials  
| PART OF Crealis **CERTIFICATED**

Supercap S.r.l. - Via Cairo, 83  
61024 Mombarcio - Pesaro - Italia  
Tel. +39 0721 470507 - Fax +39 0721 471243  
info@supercap.it - supercap.it

This specification is property of Supercap Srl. It must not be copied or disclosed in any form unless under written permission received by Supercap Srl.  
Supercap Srl reserves the right to modify the content of this document without giving any notice.

# SCTSBE2514/1023

T Monopiece beige diameter 14 Top 10x23

Date 11-09-19 Print 03-04-24

Format A4 - Drawing 3686



170 cm.

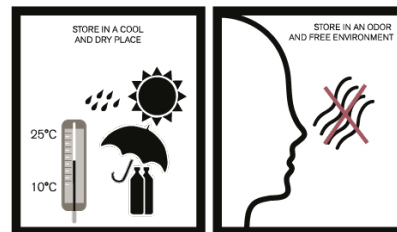
Pallet pcs.	120.000	4000	x30 boxes
Weight kg.	375	+/- 10%	

Europallet 80x120 cm.

Note: if requested, Pallet is available:

- ☐ PLASTIC VERSION
- ☐ EPAL VERSION

(protected with cardboard corners and stretch film)



Box pcs.	4.000	2000x 2	bags
Weight kg.	12,50	+/- 10%	



30 cm.

40 cm.

N.Morris - 05.04.24

*N Morris*

**Supercap**  
| PART OF Crealis

**BRCS**  
Packaging Materials  
CERTIFICATED

Supercap S.r.l. - Via Cairo, 83  
61024 Mombrocio - Pesaro - Italia  
Tel. +39 0721 470507 - Fax +39 0721 471243  
info@supercap.it - supercap.it

This specification is property of Supercap S.r.l. It must not be copied or disclosed in any form unless under written permission received by Supercap S.r.l.  
Supercap S.r.l. reserves the right to modify the content of this document without giving any notice.