

# FINAL PRODUCT TECHNICAL SPECIFICATION

FAMILY

TBLOC

DATE

09/02/2022

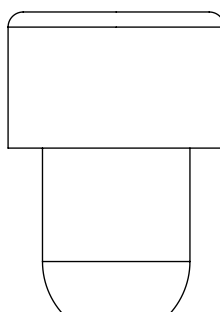
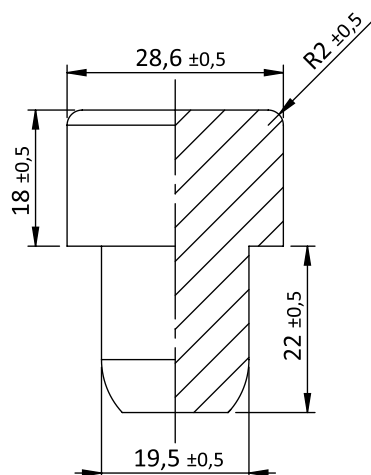
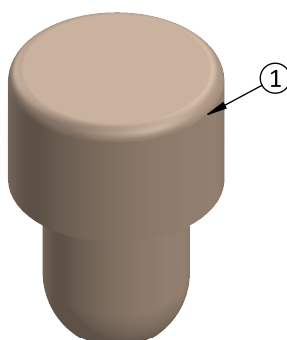
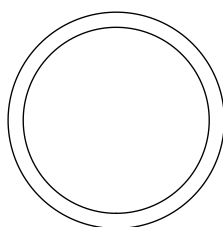
PRODUCT  
DESCRIPTION

AD 29x18/19.5

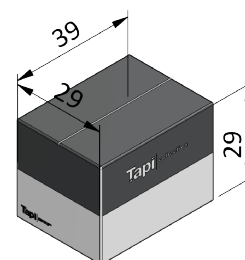
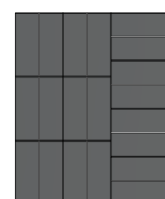
PROJECT  
NUMBER

## PRODUCT DRAWING

Scale 1:1



## PACKAGING SYSTEM (MAXIMUM DIMENSIONS)



### APPROXIMATE

WEIGHT PER BOX (KG): 9

DIMENSIONS: cm

TOLERANCES:  $\pm 5.0$  cm

STOPPER PER BOX: 1000

BOXES PER LAYER: 10

LAYERS PER PALLET: 6

BOXES PER PALLET: 60

### WAREHOUSE:

Type of warehouse: Closed and protected against dust and moisture.

Temperature: 20° - 28° C

Max suggested time in warehouse: - 6 months for cork  
- 6 months for micro-agglomerate  
- 12 months for synthetic

### NOTE:

The stoppers must be packed in a sealed polythene bag, placed inside a corrugated cardboard box, with supplier identification, product type, part number, date of manufacture, lot, content and maximum stowage. The quantity of product per box may vary  $\pm 10\%$ .

### RECOMMENDATIONS:

Keep product boxes on pallets. Do not leave the goods exposed to sun or moisture. Once the bag is opened, it is suggested that the product be depleted, or sealed again.

LIQUID BOTTLED:

APPROXIMATE WEIGHT (g):  
7.5

DIMENSION: mm

DESIGNER: **epellizzato**

Nr

List of components

Material

Color

Customization

Finishing

1

Synthetic Cork

Foamed blend of polyolefines  
(1001)

Beige

THE CUSTOMER APPROVES TO  
START THE PRODUCTION:

(Customer's signature, Date)